

Technical Bulletin

11-29-07

Radar Features

Radar Auto Warm-up

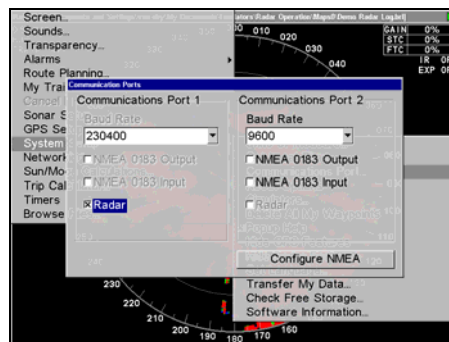
RIM 100 & RIM 200

The latest software update for radar-compatible display units includes the Auto Warm-Up feature which warms up the radar every time the display unit is turned on. The feature works with both the RIM 100 and RIM 200.

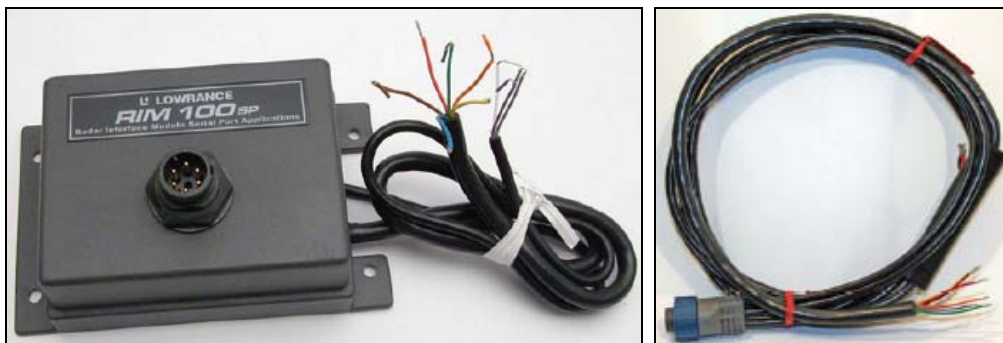
If the RIM 100 is used, it must be powered from the same source as the display unit to initiate auto warm-up. If the RIM 100 is powered from a separate power source, you will have to start the warm-up process manually, using the display unit's radar menu.

To start warm-up process manually:

1. Press Menu twice and select System Setup.
2. Select Communications Port and press Enter.
3. Highlight Radar and press Enter to turn on/turn off the Auto Warm-up feature.



Selecting Radar from the Communications Ports menu will turn on the Auto Power-On feature.



Rim 100 (left). Rim 200 (right).

Caution:

If you do not plan to use your radar every time the display unit is turned on, turn off the Auto Warm-up feature by turning off Radar on the Communications Port menu.